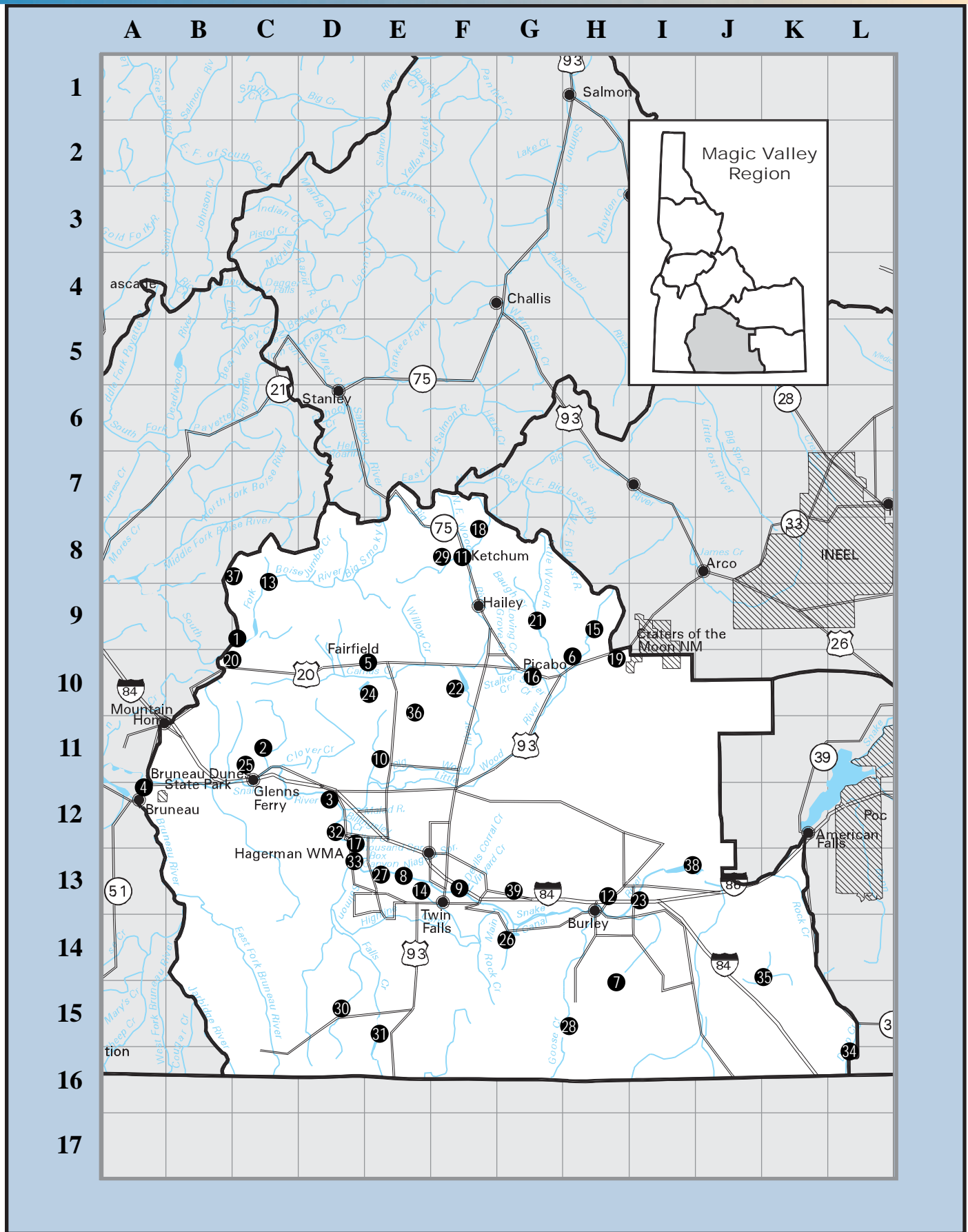


Magic Valley Region Fisheries



Magic Valley Region Fisheries

Lakes and Reservoirs (Size in acres)	Map Location	Cold Water Fish										Warm Water Fish						Facilities								
		Rainbow Trout	Cutthroat Trout	Brown Trout	Brook Trout	Lake Trout	Bull Trout	Chinook Salmon	Kokanee Salmon	Tiger Muskie	Walleye	White Sturgeon	Mtn. Whitefish	Smallmouth Bass	Largemouth Bass	Crappie	Bluegill	Yellow Perch	Channel Catfish	Bullhead Catfish	Pumpkinseed	Motor Restriction	Boat Ramps	Docks	Toilets	Camping
1. Anderson Ranch Reservoir (4,740)	C9	◆					◆	◆					◆			◆						◆	◆	◆	◆	
2. Blair-Trail Diversion Reservoir (15)*	C11	◆														◆			◆							
3. Bliss Reservoir (254)	D12	◆								◆			◆	◆		◆						◆	◆	◆		
4. Bruneau Dunes Ponds (100)	A12												◆		◆						◆			◆	◆	
5. Camas Ponds #1 and #2 (5)*	E10	◆																								
6. Carey Lake (517)	H10												◆		◆	◆	◆	◆	◆	◆	◆	◆		◆		
7. Lake Cleveland (25)	H14	◆	◆																		◆			◆	◆	
8. Crystal (Springs) Lake (5)	E13	◆																					◆	◆		
9. Dierkes Lake (25)	F13	◆											◆		◆						◆		◆	◆		
10. Dog Creek Reservoir (60)	E11	◆						◆					◆		◆	◆	◆					◆	◆	◆		◆
11. Dollar Lake (1)*	F8	◆																					◆	◆		
12. Emerald Lake (30)	H13	◆											◆		◆				◆		◆			◆		
13. Featherville Dredge Pond (2)*	C8	◆																								
14. Filer Pond (2)*	E13	◆																					◆	◆		◆
15. Fish Creek Reservoir (500)	H9	◆		◆																		◆	◆	◆		
16. Gavers Lagoon (2)*	G10	◆																						◆	◆	
17. Hagerman Wildlife Management Area (48)	D12	◆								◆			◆		◆	◆	◆	◆	◆	◆	◆	◆	◆	◆	◆	◆
18. Lava Creek Lake (3)	F8	◆		◆																						
19. Lava Lake (80)	H10	◆																								
20. Little Camas Reservoir (1,400)*	C10	◆											◆									◆	◆			
21. Little Wood Reservoir (600)*	G9	◆		◆																		◆	◆	◆	◆	
22. Magic Reservoir (3,700)*	F10	◆	◆										◆			◆						◆	◆	◆	◆	
23. Milner Reservoir (Snake River) (4,000)	I13												◆			◆	◆	◆	◆			◆	◆	◆		
24. Mormon Reservoir (2,400)	E10	◆														◆						◆	◆	◆	◆	
25. Morrow Reservoir (50)	C11												◆		◆											
26. Murtaugh Reservoir (Lake) (820)	G14												◆	◆		◆			◆			◆	◆	◆	◆	
27. Niagara Springs Wildlife Management Area (6)	E13	◆																						◆		
28. Oakley Reservoir (1,350)	H15	◆							◆							◆						◆	◆			
29. Penny Lake (1)*	F8	◆		◆																			◆	◆		◆
30. Roseworth (Cedar Creek) Reservoir (1,500)*	D15	◆																				◆	◆	◆	◆	
31. Salmon Falls Creek Reservoir (3,400)	E15	◆					◆		◆				◆	◆		◆						◆	◆	◆	◆	
32. Salmon Falls Reservoir (Lower) (800)	D12	◆								◆			◆	◆		◆	◆		◆			◆	◆	◆	◆	◆
33. Salmon Falls Reservoir (Upper) (800)	D13	◆								◆			◆	◆		◆	◆	◆	◆			◆	◆	◆	◆	◆
34. Stone Reservoir (300)	L16	◆												◆	◆		◆					◆		◆	◆	
35. Sublett Reservoir (100)	K14	◆	◆	◆																				◆	◆	
36. Thorn Creek Reservoir (120)	E10	◆																				◆		◆		
37. Trinity Lakes (including Roaring Lake) (40)	C8	◆																			◆			◆	◆	
38. Lake Walcott (Minidoka Reservoir) (11,850)	I13	◆											◆	◆		◆						◆	◆	◆	◆	
39. Wilson Reservoir (Lake) (450)	G13	◆											◆			◆			◆			◆	◆	◆		

* Family Fishing Waters

Table continued next page

Magic Valley Region Fisheries

Rivers and Streams	Map Location	Cold Water Fish										Warm Water Fish					Facilities									
		Rainbow Trout	Cutthroat Trout	Brown Trout	Brook Trout	Lake Trout	Bull Trout	Chinook Salmon	Kokanee Salmon	Tiger Muskie	Walleye	White Sturgeon	Mtn. Whitefish	Smallmouth Bass	Largemouth Bass	Crappie	Bluegill	Yellow Perch	Channel Catfish	Bullhead Catfish	Pumpkinseed	Motor Restriction	Boat Ramps	Docks	Toilets	Camping
Baker Creek	E8	◆			◆																				◆	◆
Big Wood River	F8	◆		◆	◆						◆														◆	◆
Big Wood River, East Fork	F9	◆			◆						◆														◆	◆
Big Wood River, North Fork	F7	◆			◆						◆														◆	◆
Billingsley Creek	D12	◆		◆																						
Boise River, S. Fork above Anderson Ranch Res.	C8	◆			◆		◆																		◆	◆
Camas Creek	D10	◆		◆																						
Cassia Creek	I15	◆	◆		◆																					
Cedar Draw Creek	E13	◆																								
Deep Creek (Twin Falls County)	E13	◆																								
Deer Creek (Blaine County)	F9	◆			◆																					
Goose Creek	G16	◆	◆		◆																					
Grove Creek	G10	◆		◆	◆																					
Jarbidge River	B15	◆					◆																			
Lake Creek	F8				◆																					
Lime Creek	C9	◆					◆		◆																	
Little Wood River	G11	◆		◆	◆							◆													◆	◆
Loving Creek	G10	◆		◆	◆																				◆	◆
Malad River	E12	◆																								
Niagara Springs Creek	E13	◆																							◆	
Richfield Canal	F10	◆																								
Riley Creek	D12	◆																								
Rock Creek (Twin Falls County)*	F14	◆		◆	◆																				◆	◆
Salmon Falls Creek	D14	◆			◆							◆													◆	
Silver Creek	G10	◆		◆																					◆	◆
Smoky Creek, Big	E8	◆					◆		◆																◆	◆
Smoky Creek, Little	E9	◆					◆		◆																	
Snake River - C.J. Strike Reservoir to Lake Walcott	E11	◆		◆							◆	◆	◆	◆	◆	◆	◆	◆	◆		◆				◆	
Stalker Creek	G10	◆		◆	◆							◆													◆	
Trail Creek	F8	◆			◆																				◆	◆
Trapper Creek	G15	◆	◆		◆																					◆
Trinity Creek	C8	◆					◆		◆			◆														
Warm Springs Creek	F8	◆			◆							◆														
Willow Creek	E9	◆																								

* Family Fishing Waters

Did you know?

Idaho's Free Fishing Day is the first Saturday of the first full week in June each year.

Fish any legally-open water anywhere in Idaho; no license required! It's an inexpensive way to introduce the whole family to fishing.



Mike Demick, IDFG

